

# RCForb (Client) User's Manual

## Operating with RCForb Client Overview

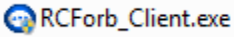


# Installation & First Run (Client)

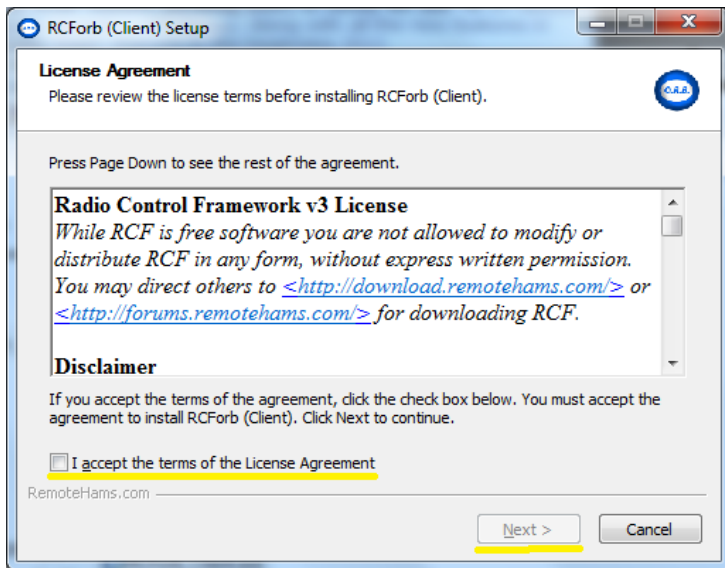
## Download and Install

You may download the latest public release of RCForb (Client) from <http://download.remotehams.com/>.

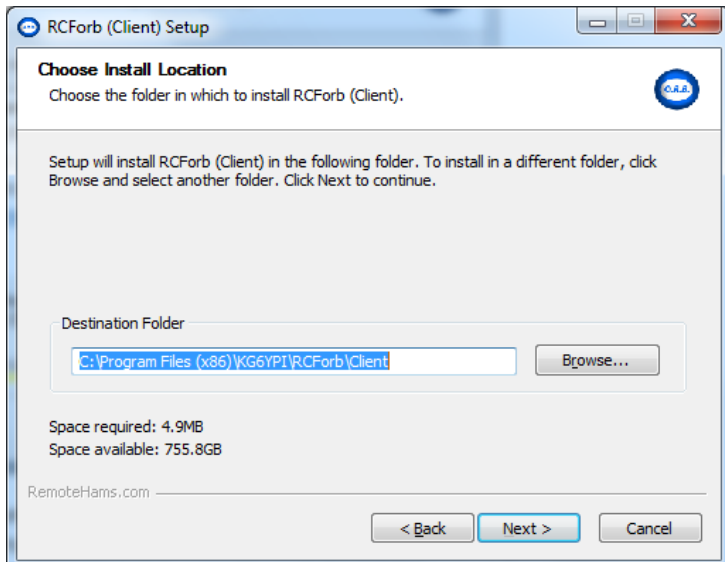
Locate the downloaded file and double-click on “RCForb\_Client.exe” to start setup.



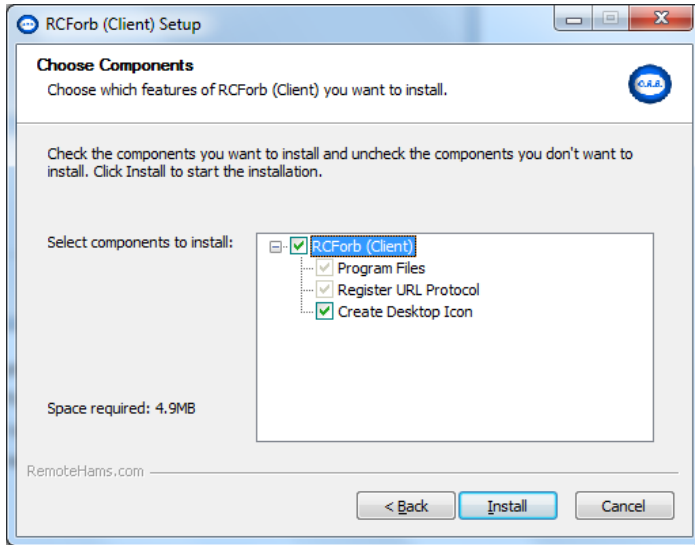
You should now see a License Agreement dialog, review and accept, and then click on next.



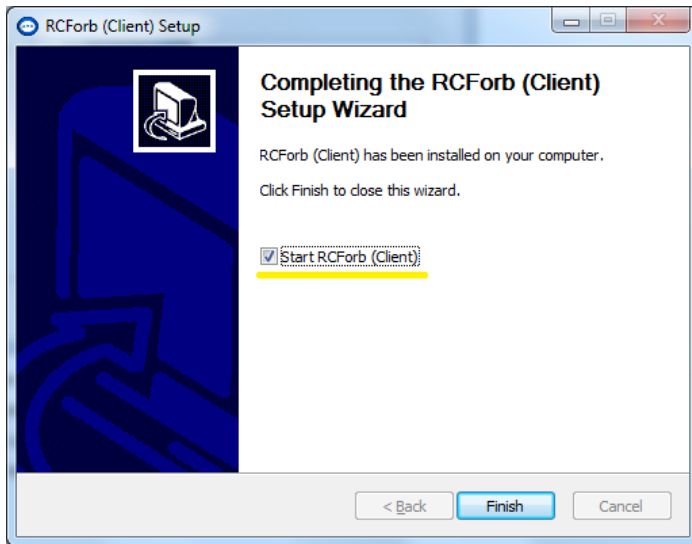
You can then customize the installation location of RCForb (Client). Click on Next.



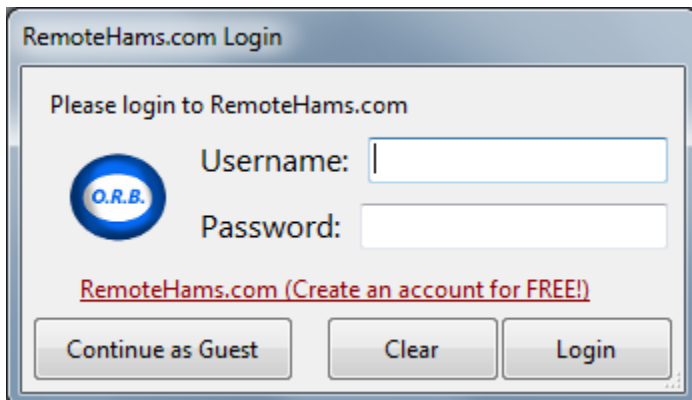
You can now choose to install a desktop icon or any additional installation options. Click on Install to begin installation.



If you do not want to start RCForb (Client) at this time, you may un-check the "Start RCForb (Client)" option.

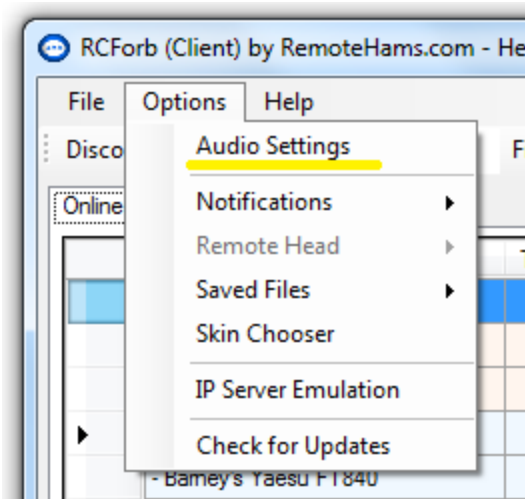


## On First Run



You will be asked for your RemoteHams Username & Password, on first run. If you choose so, you may continue as a guest by clicking on the button labeled "Continue as Guest".

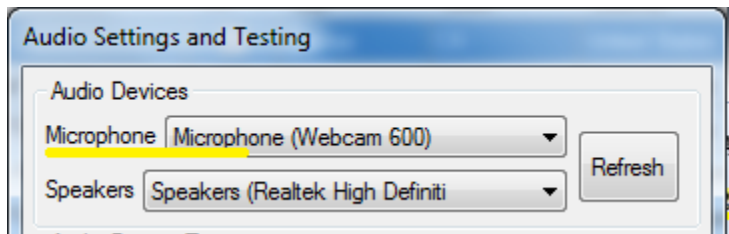
# Configuring Your Audio Settings



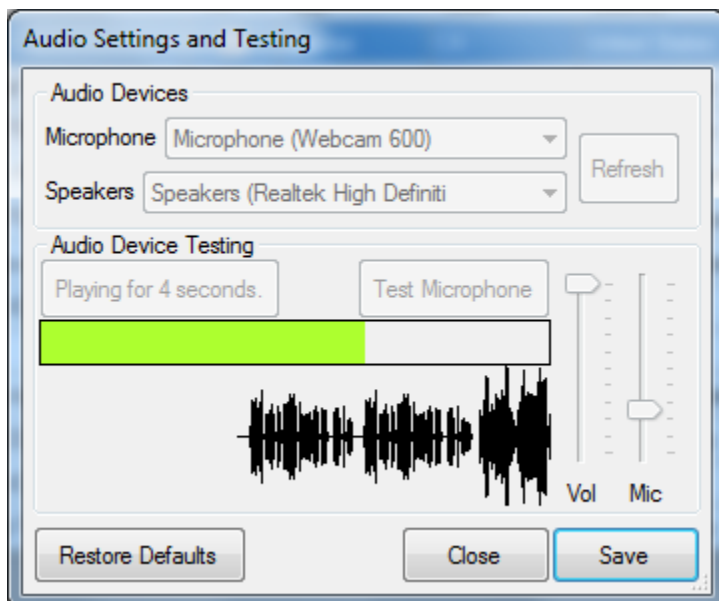
In RCForb Client, goto Options -> Audio Settings to configure the default audio settings to be used when connecting with remotes. Any of the settings you adjust in this dialog will be saved as a global setting. You can temporarily change these settings while connected to a remote. It is recommended to configure your audio properly here to avoid manually adjusting all the time. You can temporarily change audio settings while connected to a remote.

## Audio Settings Dialog

Make sure you select the proper Audio Devices for your Microphone and Speakers. You can test your selections by clicking on Test Speakers or Test Microphone buttons.



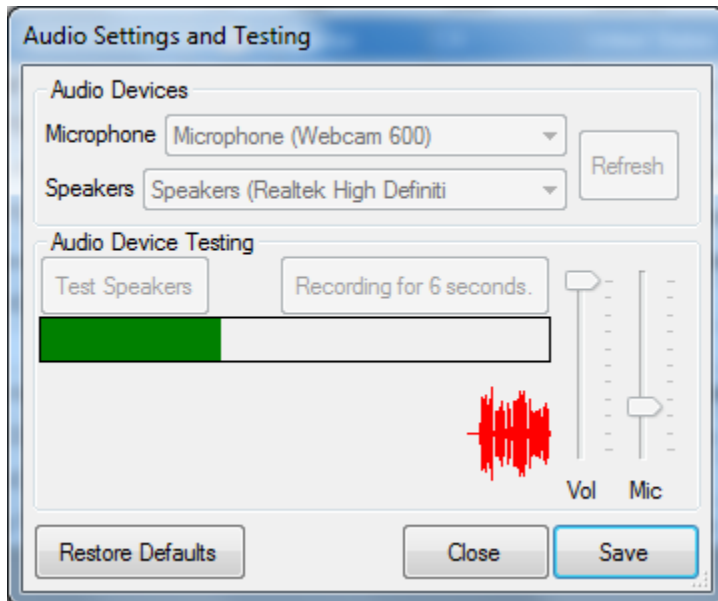
## Testing Your Speakers



Click on Test Speakers to check your speaker volume level.

You can adjust the volume level if needed. \*Note, click Test Speakers to double check the correct audio device is selected for "Speakers".

## Testing Your Microphone

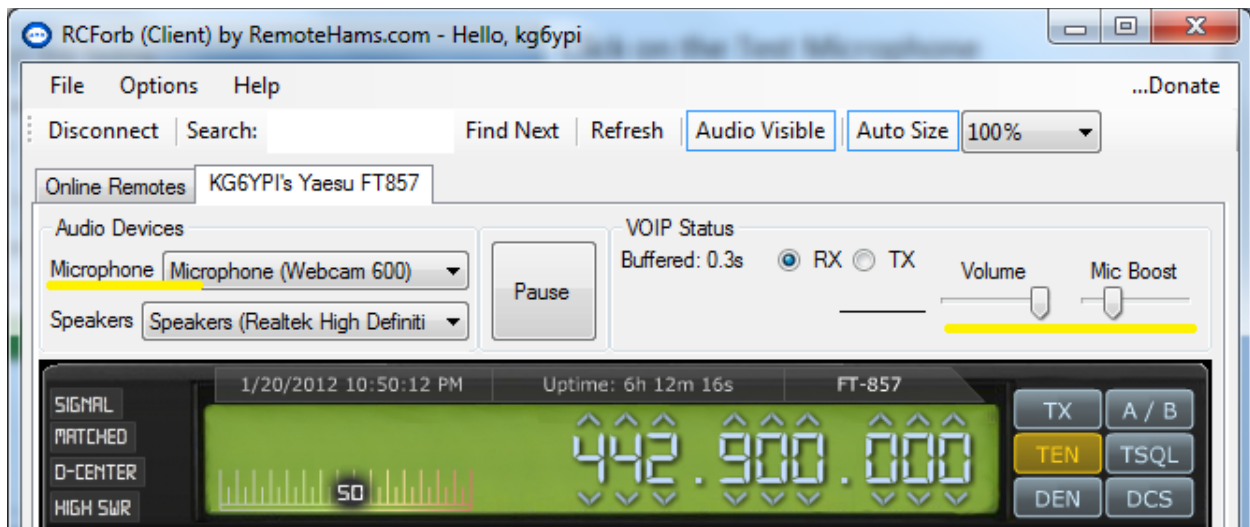


Click on the Test Microphone button to test your microphone levels. This will record 6 seconds of audio, then play it back.

\*Note, adjusting the Microphone slider adjusts the system's level. Same result as controlling the microphone level from within Windows itself.

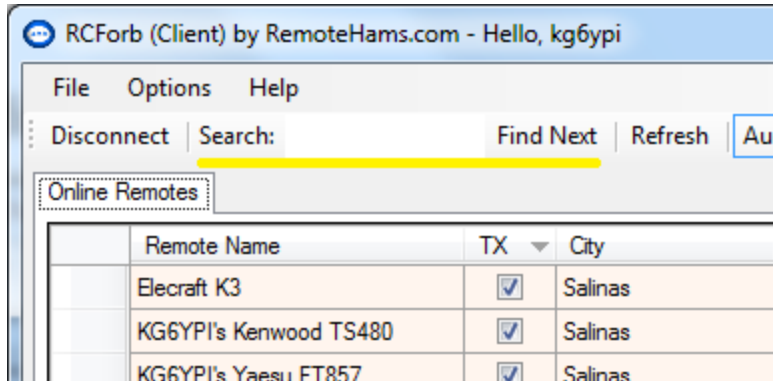
## Temporarily Changing Your Audio Settings While Connected to a Remote

To change your microphone or speaker device, you must restart the VoIP stream by clicking on the Stop button then Play button for the newly selected audio device to take effect.



It is possible to adjust your volume or microphone level without restarting the VoIP stream.

# Finding a Remote (Connect)



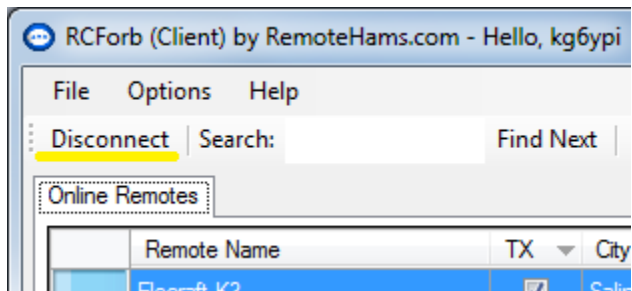
In RCForb Client's Toolbar you will find a "Search" field. Enter an OrbID or any a text string to search against. If multiple matches are found, the next match is selected.

To connect to a remote, select the remote desired, and then click on "Connect" button in the bottom right of the online list. You may also **double click on the remote to establish a connection.**

## Identifying TX Capable Remotes

In the screenshot above, you can see the "TX" column for the remotes listed. If there is a check, this remote supports TX. You will need to contact the radio owner, to obtain TX permission.

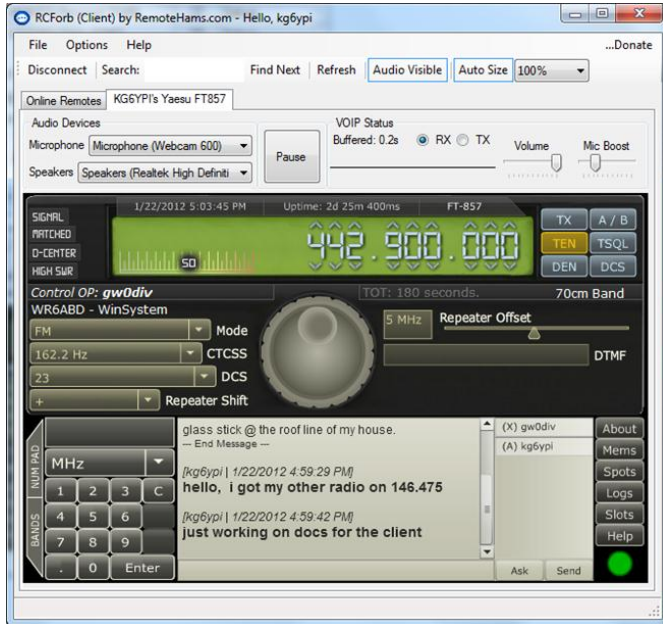
## Disconnecting from a Remote



In RCForb Client's Toolbar you will find a "Disconnect" button. Click on this button to disconnect from the current remote. *\*If the Online Remotes tab is selected when this button is clicked, all remote connections will be disconnected.*

# Using a Remote (RX & TX)

## Tuning Around (RX)



Every radio has different features and options available. In general you can assume every radio has frequency control and mode control.

Frequency can be controlled by the number pad or by clicking on a digit in the frequency (note the arrows about each digit). Tuning is also possible with the tuning knob by dragging with your mouse or spinning the wheel on your mouse.

Mode control is usually available as a Dropdown. Just click on the dropdown to see a list of available options.

## Requesting Club Membership

Some remotes may require you to be a member of ham radio club before you are allowed to use the club's remote base. If you **attempt to a tune** a remote that requires Club Membership you will be **notified with** a message and a **Request button** will become available.

\*Note, more to come on Club Integration

## Transmitting on a Remote (TX)

### Locating the TX button



In the highlighted area you will find all the available buttons. If the remote supports TX, you should see a “TX” button.

Operating TX is very simple, just click on the TX button to “key” the remote radio. Then click on the TX button again, to “un-key” the remote radio.

### Getting Approved for TX

Before you request TX permission on any remote, upload an original digital copy of your Ham Radio License. Use your scanner or digital camera to create a digital copy. Make sure the file format is in JPG (Jpeg) and less than 1MB. The remote owner will verify the copy for operation in their country. For all USA based remote’s, any foreign operator must have CEPT approval visible on their license and have a reciprocal agreement with the FCC to be allowed transmit permission. For remotes based outside the USA, the rules may vary.

To Request TX permission, **click on the TX button**. A dialog will show up explaining that you do not have permission to use TX features and will have a Request button. **Click on the Request Button to send a TX Request.**

### Using the Space Bar to Transmit (TX)

TX Operation by pressing the space bar is possible but it must be “bound” to the TX button. The space bar is not always “bound” to the TX button. To “bind” the space bar to the TX button, you must first click on the TX button. As long as the TX button is the last item you have clicked on the Space Bar will be “bound”. For example, if you click on the chats box, you must click on the TX button again to “bind” the space bar.